


SolidWorks™ WPDM Client (64-Bit)

(Installing/Changing Workgroup PDM Client on Student Edition/Access)

Step 1 (Sldim.xml File): “Explore” your SolidWorks install CD (whether changing the install or starting from scratch). Copy and paste the contents to your computer. Go into the folder “sldim” and change the name of “sldim.xml” to “sldimOLD.xml”. Now, copy the sldim.xml file SolidWorks has provided into the folder. Continue with the install instructions below.

Step 2 (Start Install): Insert SolidWorks CD and wait for the install screen to appear. If the screen does not appear, go into your “My Computer” and start the installation screen there. Once the install screen appears, choose “Individual (on this computer)” and click “”

- ☒ Individual (on this computer)
- ☐ Administrative image
- ☐ Server products

NOTE: if you are trying to change a previous installation, go into your “My computer” → “Add/Remove Programs”. Then right click on SolidWorks and select “Change”. From there you can follow these steps starting at Step 2.

Step 3 (Serial #): Enter the serial number that came with your software. Where it asks if you have other serial numbers, do not check off any of the options.

Now click “”

Serial Number

Enter your serial number information.

☒ SolidWorks Standard, Professional, Premium or SolidNetWork License

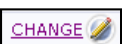
XXXX XXXX XXXX XXXX XXXX XXXX

Do You Have Other Serial Numbers?


- ☐ SolidWorks Workgroup PDM
- ☐ SolidWorks Simulation
- ☐ SolidWorks Motion
- ☐ SolidWorks Flow Simulation

Step 4 (Change Products):


(A)


Once you reach the Summary page, click on the “” button.

Summary
This is a new installation of 2011 SP2.0.

Products 

SolidWorks: FeatureWorks, PhotoView 360, SolidWorks Toolbox, SolidWorks Routing, SolidWorks Utilities, ScanTo3D, 3D Instant Website, TolAnalyst, CircuitWorks, Design Checker, Example Files, Manuals, Help Files
SolidWorks eDrawings
SolidWorks Flow Simulation
SolidWorks Simulation
SolidWorks Motion
Languages: English

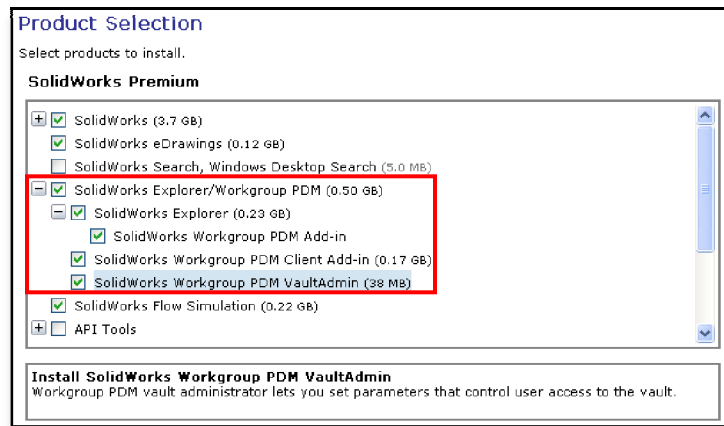
Installation Location 


Toolbox/Hole Wizard Options 

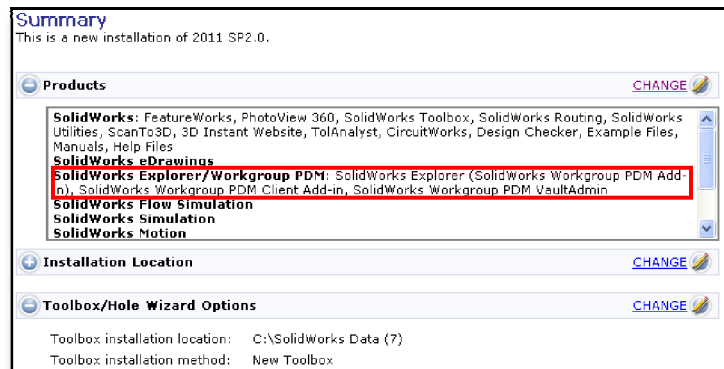
Toolbox installation location: C:\SolidWorks Data (7)
Toolbox installation method: New Toolbox

(B)

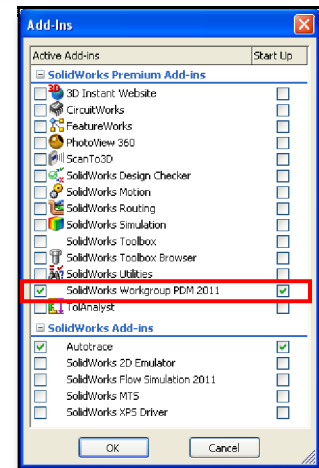
Now, in the Product Selection Screen, select the following. SolidWorks Explorer/Workgroup PDM, SolidWorks Explorer, SolidWorks Workgroup PDM Add-in, SolidWorks PDM client Add-in, and (OPTIONAL) SolidWorks Workgroup PDM VaultAdmin. Now go back to the Summary page.



Step 5 (Install): Now your summary page should look like this. Click on the “” button and begin your install.



Step 6 (Setting Up Add-In): Open SolidWorks and go to “Tools” → “Add-Ins...”. The screen on the right will appear. Select to have SolidWorks Workgroup PDM to be active and start on start up. Then press “OK” and close SolidWorks.



Step 6 (Logging in): Enter the vault computer name and description as show to the right. Then enter your provided username and password.

